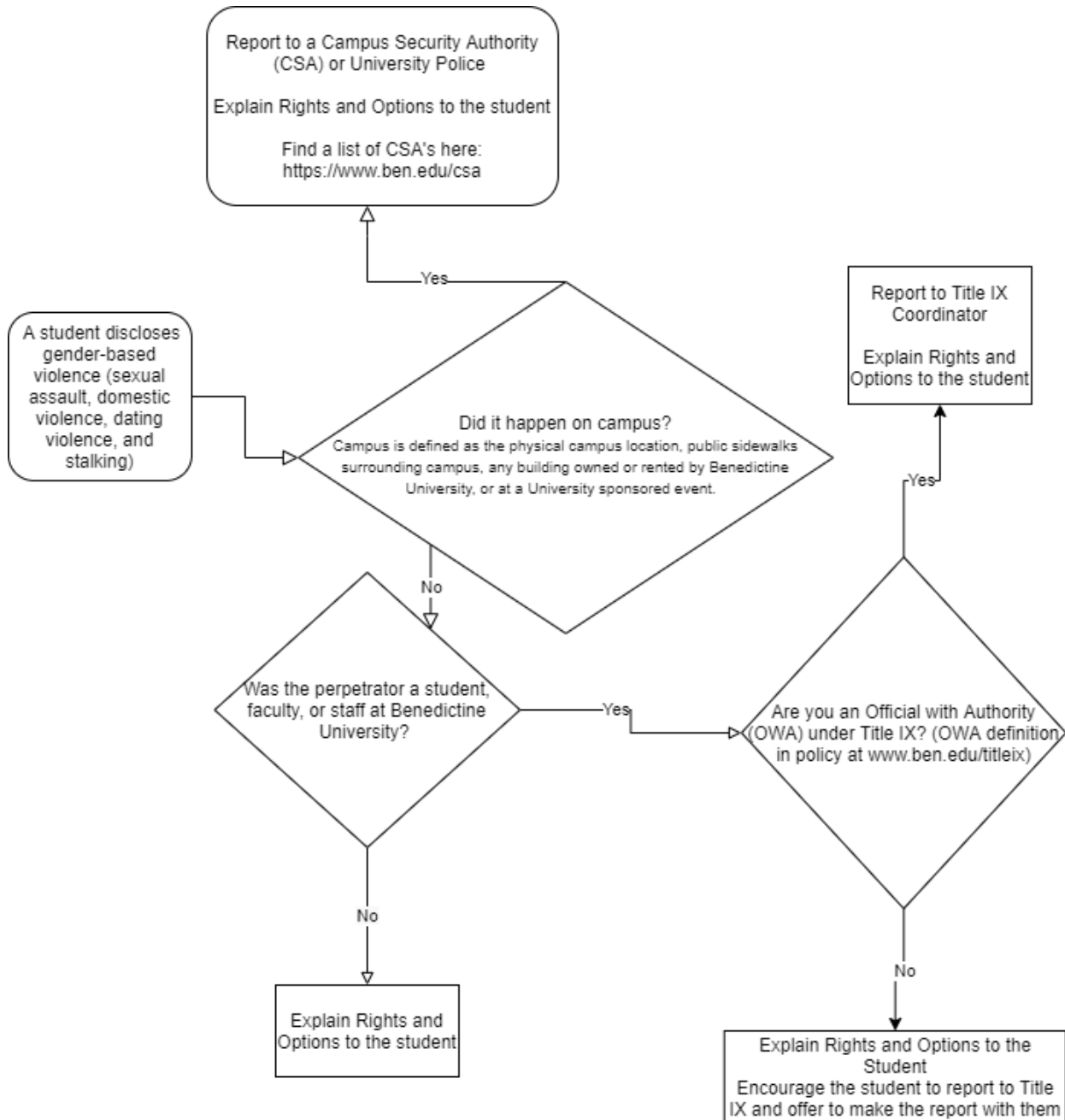




**Faculty and Staff:** Outside of our reporting obligations, it is a survivors' choice which support options they choose to use. Your role is to listen and support. Additional ways to support include walking with the student to the resource on campus or calling a resource with them. If they cannot go off campus, let the student know that victim advocates from the YWCA and Family Shelter Service can come to campus.



## Have you experienced Gender-Based Violence?

Sexual Assault, Domestic Violence, Dating Violence, or Stalking

### You have options for support

If you are not sure whether you want to keep an issue confidential, begin by contacting one of the options for confidential support or talking to a Prevention Peer Educator.

### Confidential Support

**Counseling Center**, Krasa 115B

(630)829-1800

**YWCA Rape Crisis Hotline**

(888)293-2080 (Text or Call)

**Family Shelter Service Domestic Violence Hotline**

(630) 469-5650

**Arab American Family Services Hotline**

(708)945-7600

### Reporting

**Tammy Sarver, Title IX Coordinator**

tsarver@ben.edu

Scholl Hall 228L

(630)829-6473

**Survivor Rights and Anonymous reporting under Title IX can be found at [www.ben.edu/titleix](http://www.ben.edu/titleix).**

**University Police**

(630)829-6122

In an emergency, please call 911

**Anonymous Police reports can be made to University Police at <https://www.ben.edu/student-life/police/forms-reporting.cfm>.**

### Accommodations

**Taffie Duzan, Director, Academic Support Center**

tduzan@ben.edu

Kindlon 407

(630)829-6032

**Types of Accommodations students may be eligible for:**

- Housing Adjustments
- Switching class schedules
- Academic support
- Other accommodations may be available. If you have questions, contact the Academic Support Center

Survivors or bystanders who report, in good faith, any of these incidents will not be charged with an alcohol or drug violation of the Student Code of Conduct. More information about violence prevention and response at Benedictine University can be found at [www.ben.edu/peace](http://www.ben.edu/peace).

Questions? Contact Bernadette Ramsden at [bramsden@ben.edu](mailto:bramsden@ben.edu) or (630)829-1326